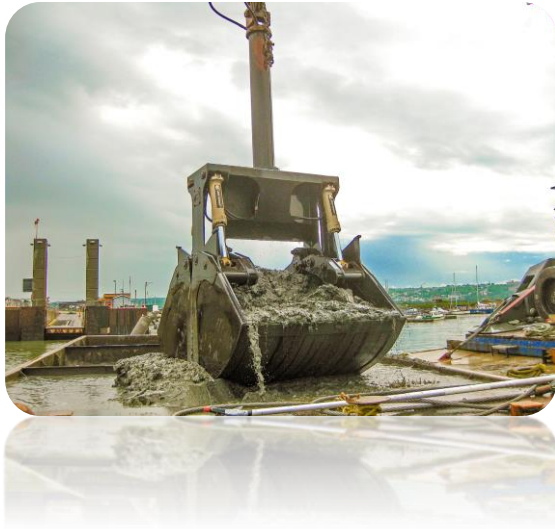


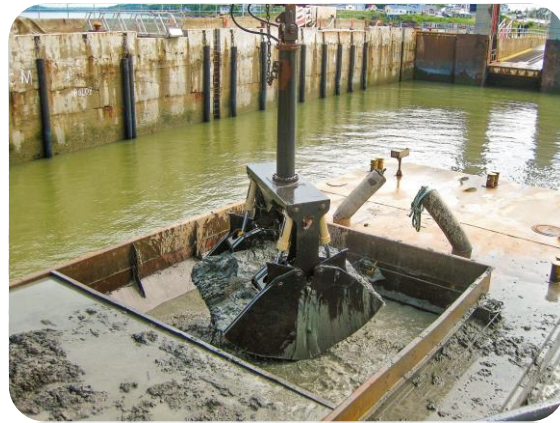
Rotobec Clamshell Bucket

Rotobec Clamshell Buckets set the industry benchmark for strength and durability. Our line of clamshells ranges in size from 1.5 yd³ all the way up to 20 yd³ capacity. Within our lineup, we offer a variety of different series including: Light duty, medium duty and heavy duty, each of which has been designed to provide the maximum level of performance based on the type of material being handled.



Our Clamshells are available with reversible bolt-on cutting edges, and we also offer models with a level cut design for dredging. Our Clamshell Buckets come equipped with four Rotobec cylinders, each rated at 5,000 psi. The quad-cylinder design

ensures the optimal force distribution on each corner of your bucket providing maximum loads. They come standard with Rotobec's RT rotations, which in addition to standard 360° rotation and a fully supported pinion gear, are fully sealed, allowing them to be submersed in water up to 15 feet deep. All backed by Rotobec's 18 month/3,000 hour warranty.



www.rotobec.com